

Forensic Equipment



**CATALOG
2025**

ABOUT US



EXPERIENCE & PASSION

For nearly 20 years, we have supported crime investigation by providing innovative, high-quality forensic equipment.



CONSULTANCY & ADVICE

We believe in a customer-focused approach. Contact us to benefit from our expertise and receive tailored advice to maximize the potential of your forensic equipment.



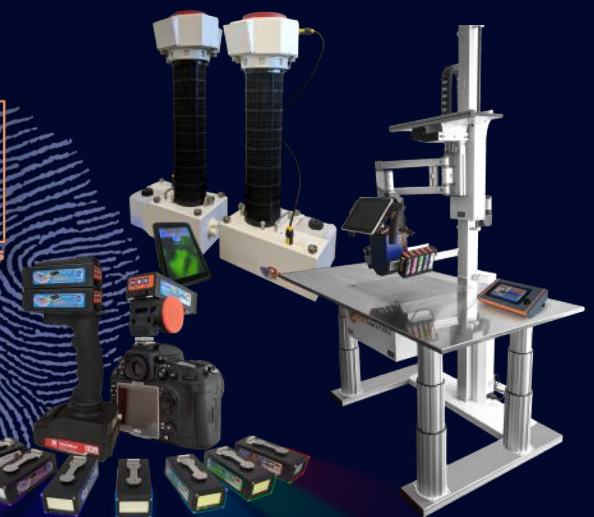
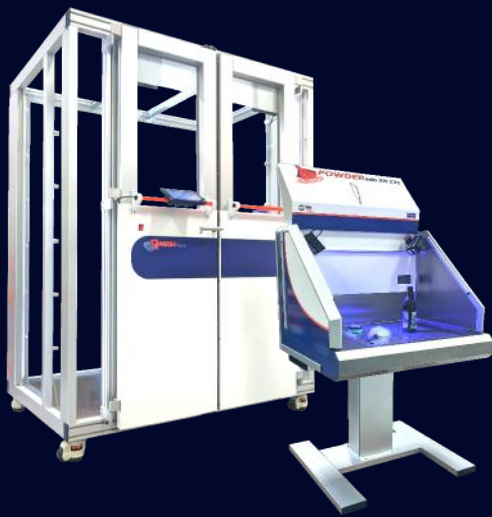
QUALITY DESIGN & PRODUCTION

All our products are designed and manufactured in accordance with ISO 9001 quality management standards at our state-of-the-art production facilities in Germany.



SERVICE & SUPPORT

From installation and user training to preventative maintenance, calibration, and repairs, we are a reliable partner you can trust.



LATENT FINGERPRINT DEVELOPMENT

- Cyanoacrylate Fuming Chambers
- Crime Scene Fuming Systems
- Fingerprint Development Chambers (Nin, DFO, Ind)
- Filter Workstations



EVIDENCE DETECTION

- Forensic Light Sources
- Light Mounting Systems



EVIDENCE PHOTOGRAPHY

- Evidence Cameras
- Evidence Photography Workstations



LATENT FINGERPRINT DEVELOPMENT



MEGAfume - the fingerprint fuming chamber for optimum 360° development observation

MEGAfume cyanoacrylate fuming chambers have an external support frame with all around safety glass. This gives users a 360° view of their evidence while it develops. Even and smooth surfaces are easy to clean after use.

Customizable Illumination

Powerful, cold white LED strips are positioned in every corner. Each strip can be controlled independently, enabling optimal lighting angles for clear visualisation of fingerprint development.



Easy Cleaning & Maintenance

All shelving, supports, and brackets are removable and made from high-grade stainless steel. These components are resistant to corrosive DNA cleaning chemicals and are also suitable for cleaning in a laboratory dishwasher.

Precision Fingerprint Development

- designed to meet accreditation standards

Flexible Sizing Options

MEGAfume is available in various sizes, from benchtop models to large floor-standing units and even a walk-in chamber with a double-door entry.

Versatile Shelving

Shelving options for both small and large items make organizing evidence in the fuming chamber easier.



User-Friendly

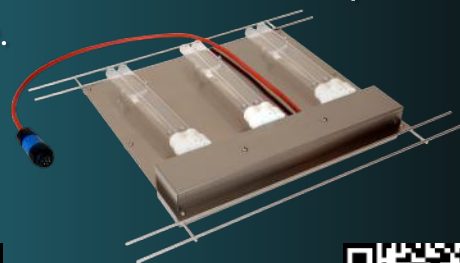
MEGAfume is easy to use featuring a multi-language interface, pre-set cycles, analysis software and advanced features such as a barcode scanner.



Safety First

An activated carbon filter removes harmful chemicals, reduces waste, and can be replaced in less than a minute. The advanced filter management system monitors filter saturation.

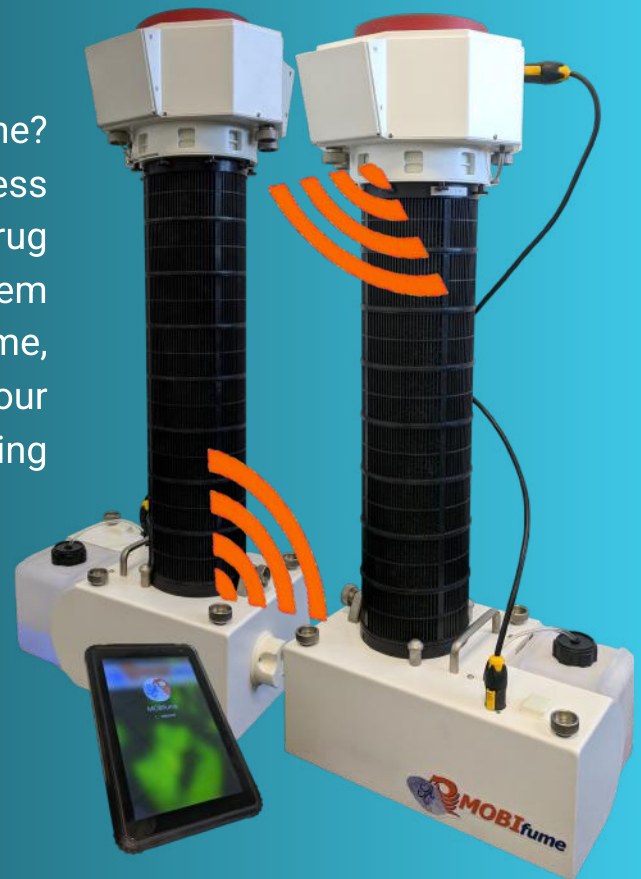
A high-power UVC radiation unit reduces the risk of DNA contamination by breaking down the DNA chains after a development cycle.



MOBIfume - Crime Scene Fuming System

Build your own Fuming Chamber

Have a vehicle you can't remove from the scene? Need to fume a bathroom? Dealing with endless plastic tubing and sheeting from a drug operation? Or struggling with a heavy, bulky item you can't move? No problem! With MOBIfume, you can treat an entire crime scene or use our bespoke two-piece fuming tent without moving your evidence.

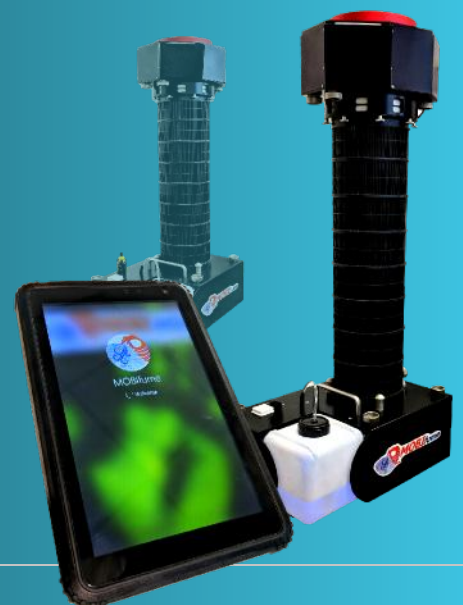


Wireless Control

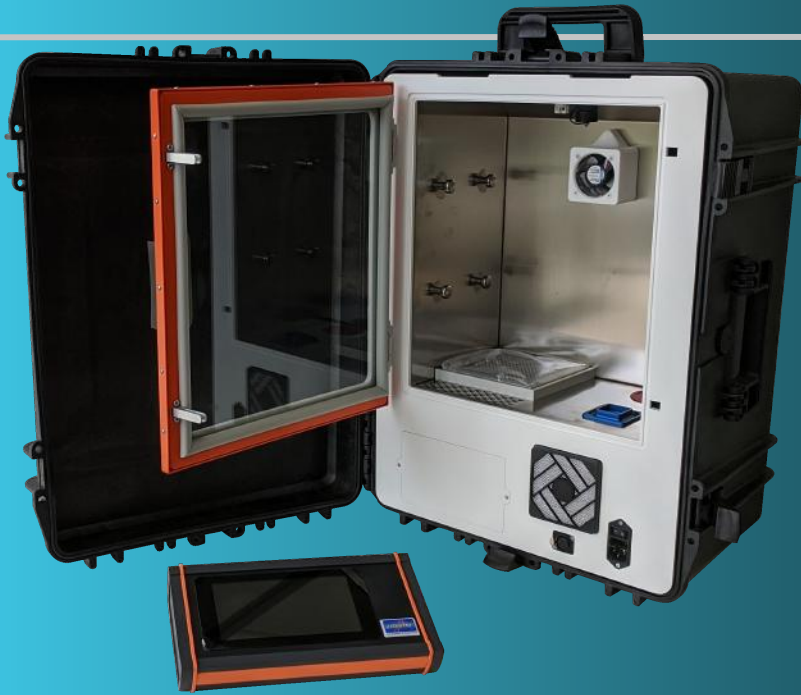
The multi-language touch panel tablet connects up to 99 MOBIfume units (humidifier, fume & filter) via radio signal to reduce cable clutter at the scene.

Mobile and Versatile

Fume entire crime scenes or large items effortlessly with MOBIfume. Its portable, scalable system delivers lab-quality results on-site. Treat up to 120 m³ with just two units – and for even larger spaces, simply add more MOBIfume units as needed.



MINIfume - Portable Fuming Chamber



When evidence cannot be transported to the lab, MINIfume allows fingerprint development on-site with the same precision as MEGAfume.

Key Features

- Compact and practical, stored in a durable rolling case with laser-cut foam inserts.
- Pre-programmed and customizable development cycles.
- Active filter system and cycle monitoring via a multi-language touch-panel display.
- Stainless steel interior for easy cleaning and resistance to DNA disinfectants.

MINIfume uses an activated carbon filter to clean the chamber air, and all cycle parameters are recorded via the datalogger feature.

Convenient design fumes smaller items like knives, handguns, and bottles.



NINcha - Fingerprint Development Chamber

Designed specifically for the development of prints on porous surfaces post-treatment with Ninhydrin, DFO or Indandione, NINcha provides precise control over temperature and humidity.

Stainless Steel Interior

Durable and resistant to corrosive DNA cleaning agents for easy maintenance. All interior shelving is removable and can fit in a laboratory dishwasher.

One Touch Operation

Easily control your NINcha with an intuitive, user-friendly touch-panel display. Pre-programmed cycles enable seamless one-button development for maximum efficiency.

All key parameters are automatically recorded by a datalogger, ensuring comprehensive QM documentation.



Different Sizes Available

Available in three sizes - benchtop (NINcha S31), mid-size standing (NINcha M31), and large standing (NINcha L31).

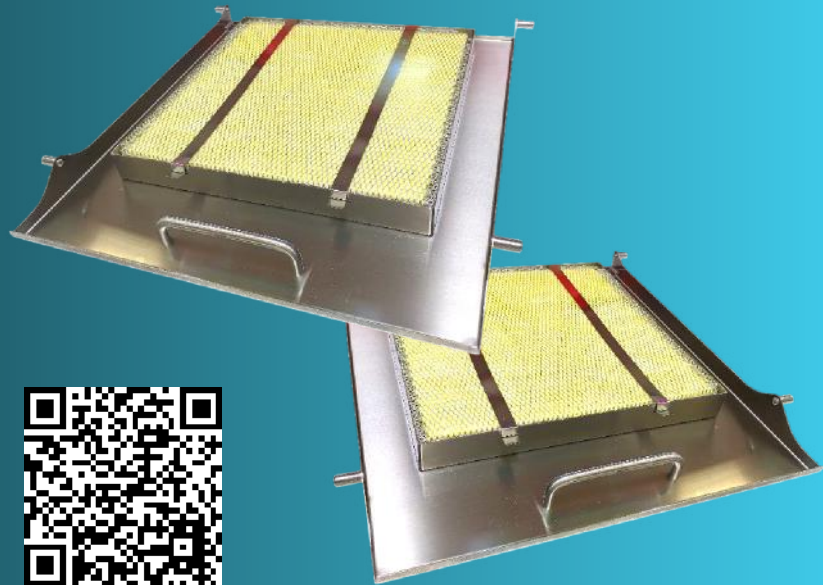


The global benchmark of Ninhydrin, DFO and Indandione development chambers



Unique Airflow Concept

All areas within the airstream are without hidden channels and accessible for cleaning without tools. Coded filter systems capture dust and other contaminants while in use. External ventilation can be connected to the NINcha but is not required.



Reduce your risk for DNA cross-contamination



Universal UVC-Radiation Unit

This removable, high-power UV-C unit with a 254-nm peak emission will break down biological contamination, such as DNA, on interior surfaces for you. Reduce the risk of cross-contamination without increasing the effort or frequency of manual disinfection. Why universal?

The unit is compatible with both NINcha and MEGAfume systems.

NINcha P31 - Portable Development Chamber



Bring the laboratory to the Crime Scene

Compact and portable, it delivers high-quality development in any field setting.

Same high-quality results as the laboratory NINcha models

The NINcha P31 includes a large glass viewing pane for evidence monitoring and a locking door to prevent evidence disturbance. The durable, suitcase sized version is the perfect solution when evidence cannot be brought to your lab.

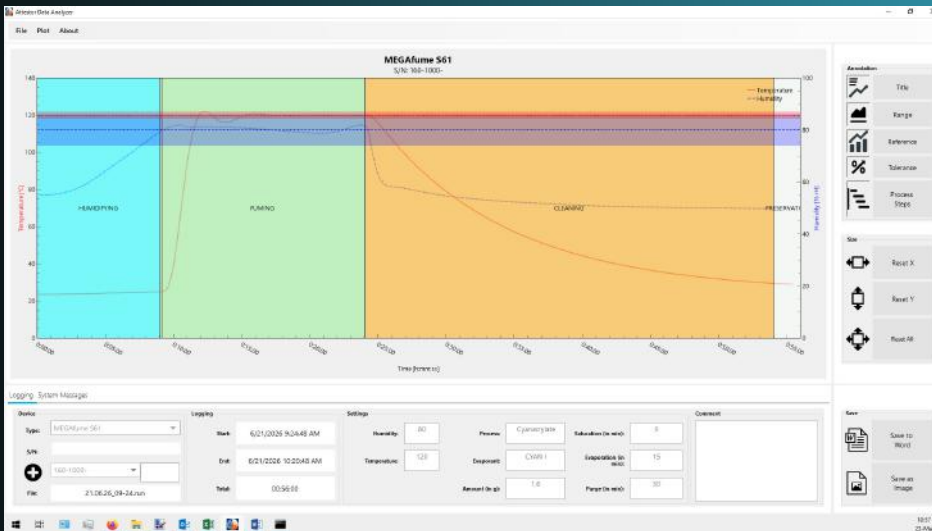
The large glass viewing pane allows you to observe evidence as it develops, and the chamber door locks automatically to protect anyone from accidentally disturbing evidence while it is being developed.



The P31 has the same datalogger system as the larger systems, providing quality assurance and making documentation of evidence processing faster and easier.



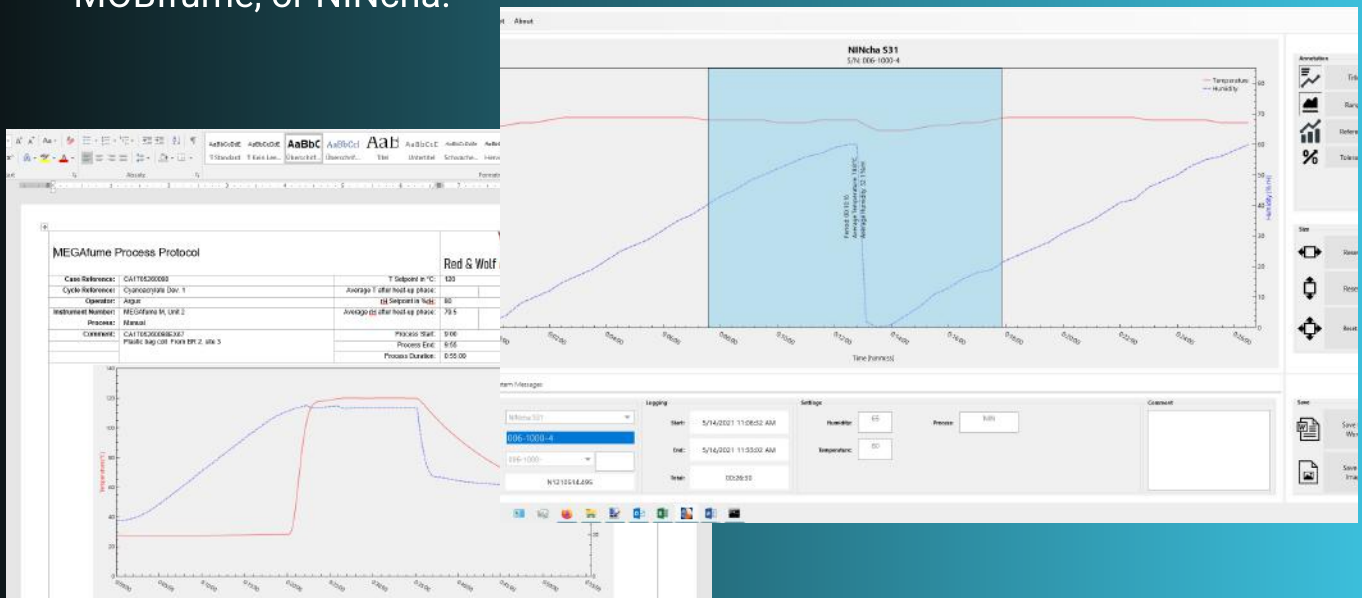
DATAanalyzer - for Seamless Data Analysis and Reporting



Compatible with MEGAfume, MINIfume, MOBIfume and NINcha

Every MEGAfume, MINIfume, MOBIfume, and NINcha unit includes a USB process data logger for comprehensive documentation.

- Automatically records all critical parameters for quality assurance.
- Data can be transferred via USB
- Free PC software allows users to view, analyze, and generate reports.
- Save data electronically or use the provided report templates to customize documentation.
- Ensures compliance with QA/ISO standards and simplifies documentation.
- Use the same program to view and analyze data from MEGAfume, MINIfume, MOBIfume, or NINcha.



POWDERado

- Fingerprint Powder Workstation



POWDERado is a state-of-the-art fingerprint powder filter workstation designed to enhance health and safety for fingerprint experts. Its automated filter system ensures optimal protection during the fingerprint development process.

Compact and Versatile Design

This benchtop unit requires no external ventilation and is easily transportable for on-scene use. POWDERado can be used on a benchtop or mounted on a height-adjustable stand, offering flexibility for sitting or standing work.

Durable and Functional Work Surface

The non-magnetic stainless steel work surface is ideal for magnetic fingerprint powder use and very easy to clean. The side flaps open fully to accommodate larger pieces of evidence, providing ample workspace. Cold LED white lighting is included, with optional LIGHTcubes for enhanced illumination.



Efficient Filtration System

The advanced filter system includes a pre-filter fleece and H13 fine particulate dust cassette, with an integrated monitor for long-term performance and safety.



TORnado - Filter Workstation for ESD-Units

Electrostatic Surface Development (ESD) is a technology used to examine indented writing within document examination. It can also develop fingerprints. Ozone and fine toner particulates may be released during this process.

Safe and Efficient Filtration

TORnado filters ozone and toner particles at optimal humidity, ensuring safety and meeting ESD quality standards. Unlike other extraction systems, TORnado maintains the necessary humidity to support high-quality results.

Customizable and User-Friendly Design

The interior of TORnado features a bed for an ESD device that is powered from within. Adjustable supports accommodate a variety of ESD units on the market. When powered on, TORnado automatically adjusts the filtration fan and mode, providing a seamless experience. The benchtop unit is designed for versatility, with the option to add height-adjustable foot supports.

No more mess

Toner beads are collected in an easy-to-clean drawer, keeping your workspace tidy.



WWW



EVIDENCE DETECTION



LIGHTcube - Modular Forensic Light Source

LIGHTcube is a modular multispectral forensic light source designed to enhance evidence detection. With illumination modules available in two white temperatures and narrow-band light emission from UV to IR, it improves visibility and contrast when paired with our colour-coded goggles and camera filters.



Handle your LIGHTcubes with ease

LIGHTcubes can be powered from a wall outlet, a corded battery pack or attached to the handle base for cordless set up.

Control your LIGHTcube

Each module features controls to adjust light intensity. You can add more modules of a single colour to boost intensity or combine different colours for greater flexibility.



The world's most versatile forensic light source

Available Wavelengths	Available Accessories
Neutral White 5000K	<ul style="list-style-type: none">• color-coded, matching viewing & safety goggles• color-coded, matching camera filters• different handle and power kits• sturdy transport case with laser cut foam insert• available individually configured or as pre- configured sets
Daylight White 6500K	
Infrared 850nm or 920nm	
Red 630nm	
Orange 590nm	
Pure Green 530nm	
Cyan 505nm	
Blue-Green 470nm	
Royal Blue 447nm	
Violet 410nm	
Ultraviolet 365nm	

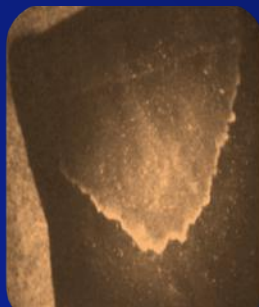


Configure your own Light Source

Customize your LIGHTcube light source to suit your specific application by combining or scaling any modules for optimal results.

Effectively reveal evidence in:

- Dust, grease, and blood
- Body fluids (saliva, urine, semen, etc.)
- Fingerprints treated with Cyanoacrylate (fluorescent & non-fluorescent), Ninhydrin, DFO, Indandione-Zinc, BY40, and more.



LIGHTrail - LIGHTcube Mounting System

LIGHTrail is a mounting system designed for LIGHTcubes, ideal for use on laboratory copy stands. When the LIGHTcube is clicked onto the rail system, it automatically connects to both power and the control bus.

LIGHTrail is available in two versions.

LIGHTrail BASIC:

- LIGHTcube packages adjustable in position and angle
- 20 cm rail (suitable for 4 LIGHTcubes on each side)

LIGHTrail PRO

- two LIGHTcube packages either side, adjustable in angle and position
- complete rail adjustable in angle and position
- 50 cm rail (suitable for 8 LIGHTcubes each side)



CONTROLbox - Multifunctional Control System

The CONTROLbox system is a user-friendly multilingual touch panel remote control for LIGHTcubes.

Take Control

Control multiple LIGHTcube modules simultaneously when mounted on the LIGHTrail. Adjust light intensity, color, and more. Save and recall lighting scenarios for consistent results.

Mix and adjust multiple module colors at once and once you adjusted everything, save your light setup as a "scenario" for later use.



EVIDENCE PHOTOGRAPHY



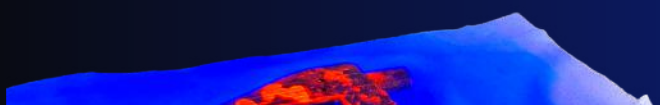
LABview - Search & Documentation Camera



Capture and document evidence with precision using LABview, an autonomous camera and video system for examination of body fluids, hair, fibers, GSR, and fingerprints.

Modifiable Light Configuration

Using LIGHTcubes you can tailor the perfect lighting scenario for your evidence search needs. For best results, the automatic filter wheel ensures the correct filter for optimal illumination and focus for photography.



Flexible Mounting Options

LABview can be mounted on a standard copy stand, our mobile camera arm or attached to our EVIscreen work surface to easily view evidence and fit your laboratory arrangement.



SCENEview VisIR

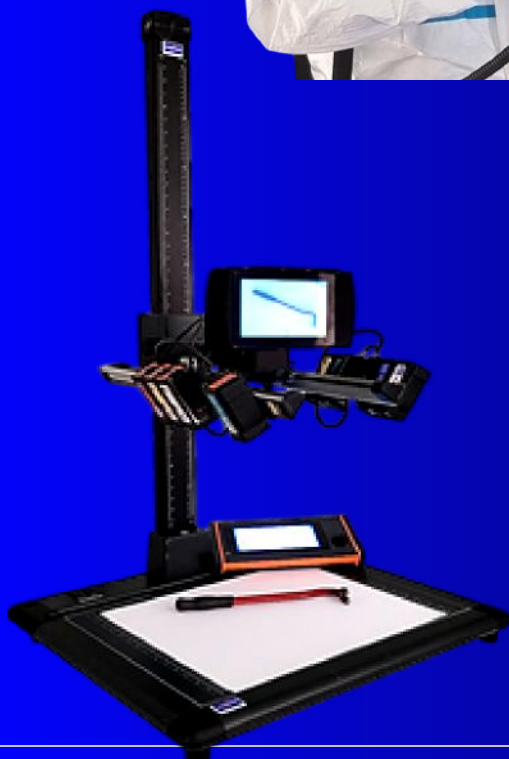
- Dual Functionality Evidence Camera

SCENEview VisIR is an advanced camera system designed for crime scene and laboratory evidence photography. This new innovative system allows seamless detection, documentation, and search for various types of evidence, including body fluids (saliva, urine, seminal fluid), blood, gunshot residues, fibers, hair, fingerprints, and more.



Dual Functionality

On scene, use the SCENEview VisIR as a handheld system or mount on a tripod. Battery-powered for extra mobility which can be mounted on the camera or carried in a separate pouch.



In the lab, SCENEview VisIR can be mounted on a laboratory stand and powered using a standard outlet. Automatic light source control can be obtained if paired with our LIGHTrail and CONTROLbox.



Versatile and Powerful Forensic Illumination

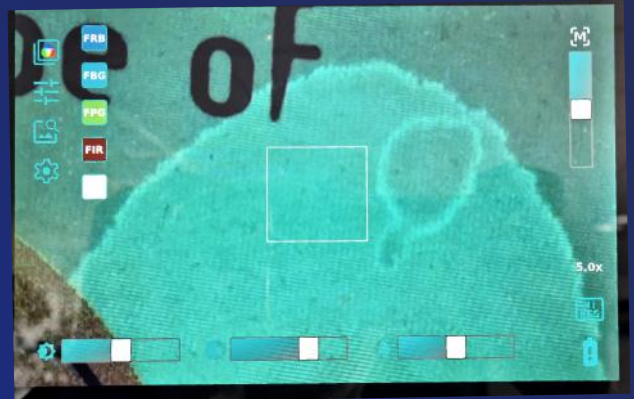


Tailored Lighting Solutions

Customize your lighting options with SCENEview VisIR and LIGHTcubes for your specific needs. Choose LIGHTcubes for your distinct application or discipline, minimizing unnecessary components.

Digital Automation

Simply place a LIGHTcube on the camera and the corresponding optical filter is automatically chosen with the appropriate camera parameters set. Manual override is possible at any time. Continuous autofocus and digital zoom are equipped.



Process Simplified

LIGHTcubes are powered by SCENEview for added convenience. The lighting selection and filter configuration are tailored to your specific needs, minimizing costs by ensuring that only the wavelength you require are included. For more info on LIGHTcubes check out the video link below.



Coming soon

PHOTOvent - Evidence Workstation for Photography and Screening

Use any camera system while maintaining a clean environment with PHOTOvent - an advanced, ergonomic workstation designed for evidence photography and screening.

Dual Height-Adjustable Features

Motorized pillars support heavy evidence while providing smooth movement when adjusting the work surface height.

The horizontally adjustable camera arm supports your camera or ring light, offering motorized coarse and fine positioning ($\approx 0.3\text{mm}$) for precise focus adjustments.



Minimize Chemical Exposure

Increase workplace safety by reducing harmful particulates and odors that can become airborne when exposing evidence to powerful forensic light. The PHOTOvent's downdraft filter system removes these away from the user's face during work. The advanced filter monitoring system alerts the user when to replace and filters can be replaced easily.



Customizable Photographic Workstation



Choose your size

Available in larger (PHOTOvent L51) and the smaller (PHOTOvent S51) versions.

Camera Mount Style

Each model can come with camera mount in fixed position or if you need to screen larger areas with a moving camera search arm that can reach any area on the evidence.

Flexible Integration

Attach your own camera or choose from our SCENEview or LABview systems, use LIGHTcube forensic light sources on LIGHTrail, or mix and match components.



CONTACTS

Attestor Forensics' headquarters and production facilities are in Bad Wurzach, southern Germany.

Since 2016, our subsidiary, Attestor Forensics US Inc., based in North Carolina, has been offering the same personalized sales and service to customers in the US and Canada that our global customers know and trust.



innovation in forensics

Head Office and
Production

Attestor Forensics GmbH
Zeppelinstr. 28
88410 Bad Wurzach
Germany



+49 7564 949 14-0



contact @attestor-forensics.com

Sales and Service Unit USA
Attestor Forensics US Inc.
Clayton, North Carolina, USA



+1 984-514-5584



us@attestor-forensics.com

www.attestor-forensics.com





SUPPORT AND SERVICES



CUSTOMER SUPPORT

Available via email and phone. For contact details, please refer to the page left or visit our website. Our support team is here to help with any issues or questions you may have.



TECHNICAL SUPPORT

Our technicians provide on-site services for repairs, inspections, and preventative maintenance when remote support isn't sufficient.



TRAINING AND RESOURCES

We offer on-site installation and training, detailed user manuals, and various online training sessions and webinars.



DESIGN AND PRODUCTION QUALITY

Our products are designed with a focus on practical applicability in your day-to-day work. From design to production and customer care, all processes are certified according to DIN EN ISO 9001.



Made in Germany

